

SMALL MEDIUM HOUSES

5

190 x 245 mm
312 Pages
Paperback

30 Houses
26 Firms
10 Cities

มหาวิทยาลัยเทคโนโลยีราชมงคลพระนคร

ห้องสมุดสาขาโชติเวช



202003569

CON- TENTS

INTRODUCTION
08-11

| **T&PN HOUSE**
BANGKOK
14-19

| **BAAN BANGWAEK**
BANGKOK
20-29

| **KRUNGTHEP-NON
RESIDENCE + OFFICE**
BANGKOK
30-35

| **BAAN KHAO LOY**
NAKHON RATCHASIMA
36-45

| **HOUSE KT**
BANGKOK
46-55

| **CAVE 58**
BANGKOK
56-65

| **TIWSON HOUSE**
SAMUT SAKHON
66-75

BAAN NAN
NAN
76-85

WHITE BOX
BANGKOK
86-95

**VIPAVADEE 58
RESIDENCE**
BANGKOK
96-101

PK HOUSE
SAMUT PRAKAN
102-111

NY HOUSE
BANGKOK
112-121

THE NEST
BANGKOK
122-129

HUAMARK 09
BANGKOK
130-139

CONTAINER HOUSE
KHON KAEN
140-149

**BAAN FLOWER
CAGE**
BANGKOK
150-159

BAAN Y
NONTHABURI
160-169

BAAN PANYA
BANGKOK
170-179

SALA ZEN
AYUTTHAYA
180-187

WIDEN HOUSE
CHON BURI
188-197

**RATCHADA 18
RESIDENCE**
BANGKOK
198-207

KIATFUNG HOUSE
SONGKHLA
208-217

979 GALLERY
SAMUT PRAKAN
218-225

BAAN PRAAI FAH
CHIANG MAI
226-235

VWFH
CHACHOENGSAO
236-245

WSS RESIDENCE
BANGKOK
246-255

WATERFALL HOUSE
BANGKOK
256-263

**KASET-NAWAMIN
RESIDENCE**
BANGKOK
264-273

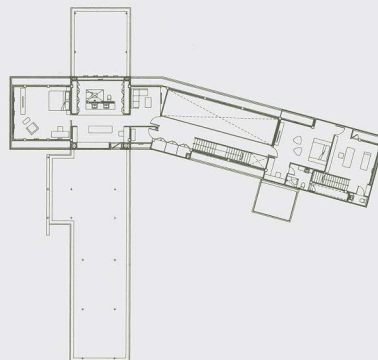
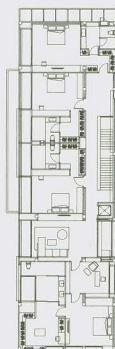
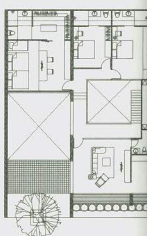
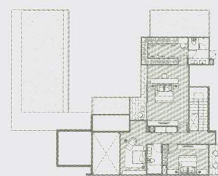
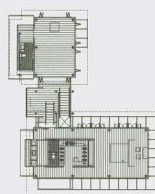
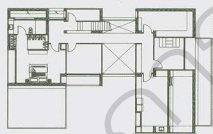
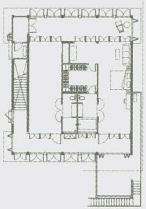
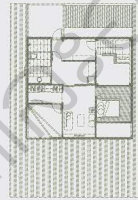
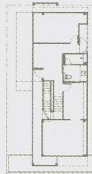
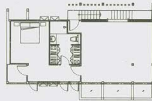
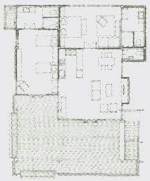
KHAO YAI HOUSE
NAKHON RATCHASIMA
274-281

TIWANON HOUSE
NONTHABURI
282-291

DIRECTORY
302-305

INTRO- DUCTION

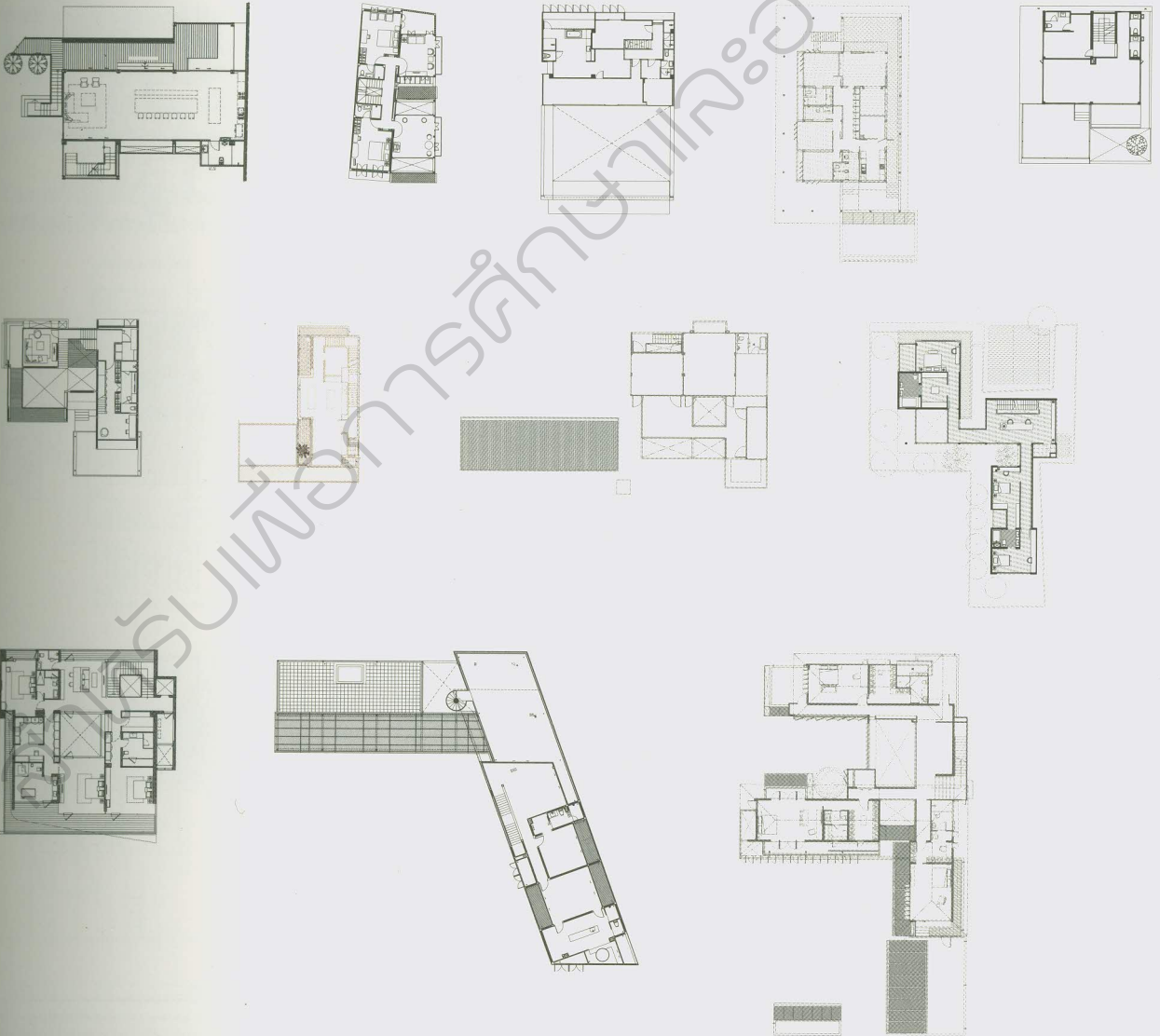
by Suluck Visavapattamawon

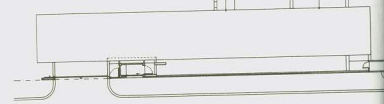
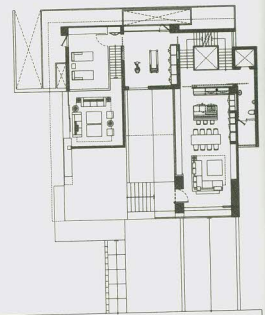
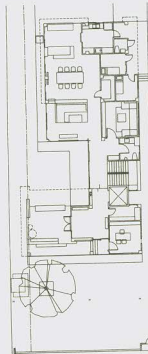
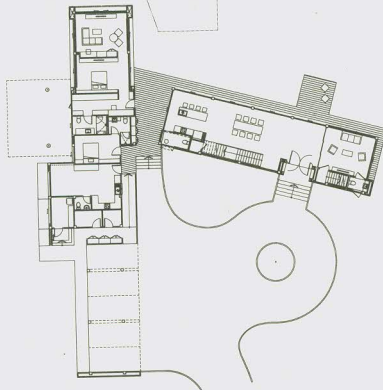
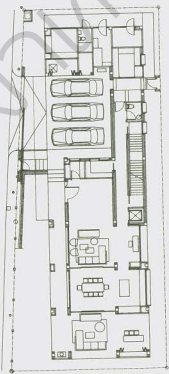
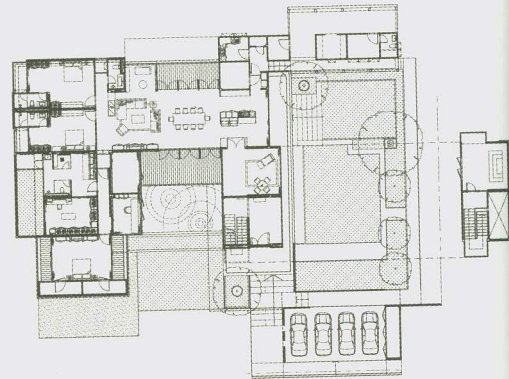
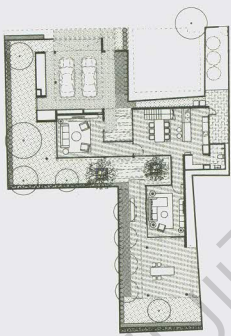
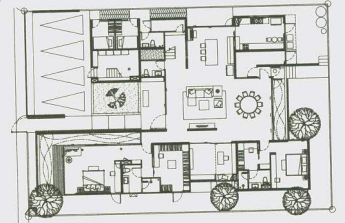
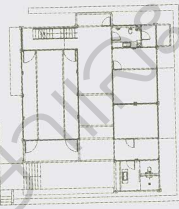
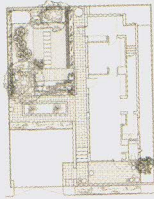
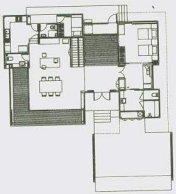
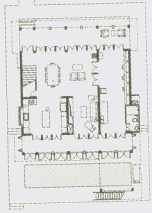
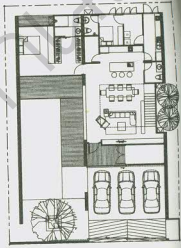
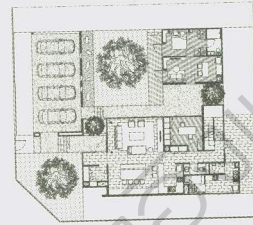
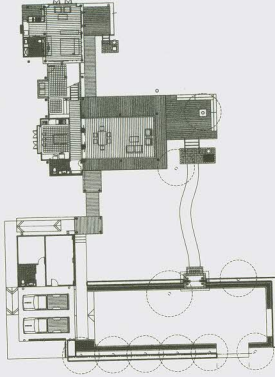
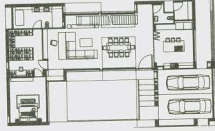
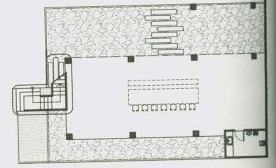
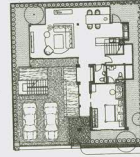
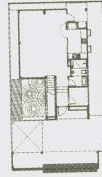
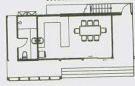
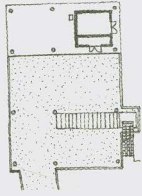
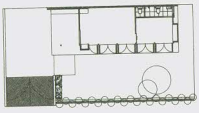


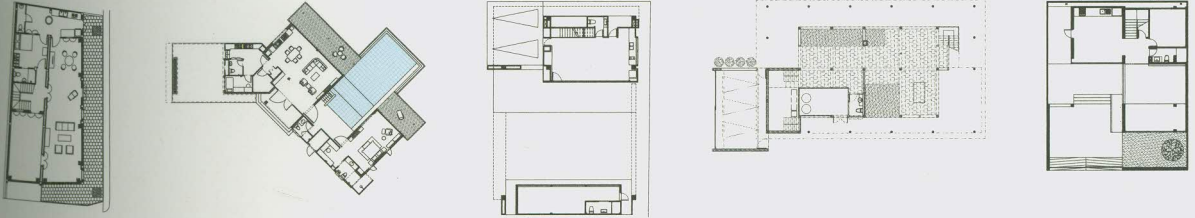
Small Medium Houses 5 is a compilation of 30 of the remarkable recent houses built in one year with numerous approaches that create new and exciting alternatives. The selection process includes submission given by the architects as well as by research and invitation. We selected the house that are stylish and innovative in many ways. In this volume we found new emerging and talented architects who reveal the new characteristics in greater depth.

Most projects featured in are located in Bangkok Metropolitan where views and land plot are limited. The renovation or expansion house that forms part of a densely packed family is still increasing due to the needs to stay close to parents and the high price of land in the inner city. Staying closer to workplace could reduce traveling hours to work. All factors from land size to owner's dreams and ideas lifestyle create unique houses. Architect's skills and imagination really push up new way of living, atmosphere, health and wellbeing and distinction in one way or another.

A great idea of thought has been taken to make the grand statement. At the ground floor the design of living and dining space becomes the starting point of the rest spaces. We gathered the ground floor plans together in one page to show that most of the living room and dining room are open and connected







as one area. The pantry with island - counter around still exists for family members and friends to share and chat while cooking. Sometimes double height volumes was used to expand the views, to define remarkable space and to increase a feeling of luxury when social activities take place.

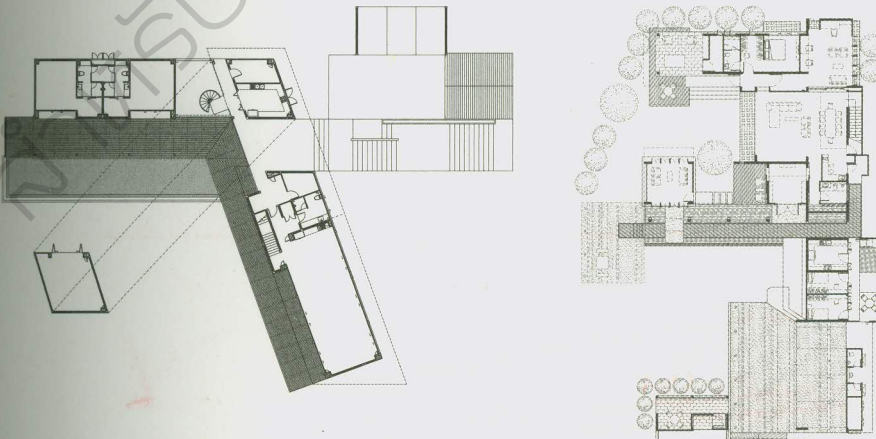
To perceive better view, daylight and sunlight are controlled by using the screening that create changes of light and shadow. Many architects established and developed the subtle changes of light quality with variety of dramatic techniques. Double - skin façades become shading devices to reduce heat transfer throughout the house. These façades can be used for privacy as well.

The upper floor is used for more private functions, incorporating a master bedroom with en-suite and walk-in closet and the further bedrooms, each with en-suite. Only master bedroom gets the natural air-flow with through ventilation. Most residents get used to sleep with air conditioning because of hot weather. The quality of air in the city also forced the owner to close windows to avoid dust and smoke. Some houses have service quarter like thai kitchen and maid's bedroom located on the upper floor to gain more space for living quarters at ground level.

The predominant materials used in the volume are concrete, metal, timber and glass. Each of which are efficiently used to reveal the true strengths and create strong characteristic for the house.

“ The successive houses in which we have lived have no doubt made our gestures commonplace. We are the diagram of the function of inhabiting that particular house.”

The Poetics of Space - Gaston Bachelard, 1958



สามารถยืมและติดตามหนังสือใหม่ได้ที่ ระบบห้องสมุดอัตโนมัติ Walai Autolib

<http://lib.rmutp.ac.th/catalog/BibItem.aspx?BibID=b00104965>



Small medium houses 5 / Nithi Sthapitanonda, editor.

Published	Bangkok : Li-Zenn, 2018
Detail	291 p. : col. ill ; 24 cm
Subject	Architect-designed house(+) Architecture -- Thailand(+) Architecture(+) Architecture, Modern(+) Interior decoration(+)
Added Author	Nithi sthapitanonda, Editor
ISBN	9786167800998
ประเภทแหล่งที่มา	 Book

"สำหรับเพื่อการศึกษาค้นคว้าและอ่านเท่านั้น"